



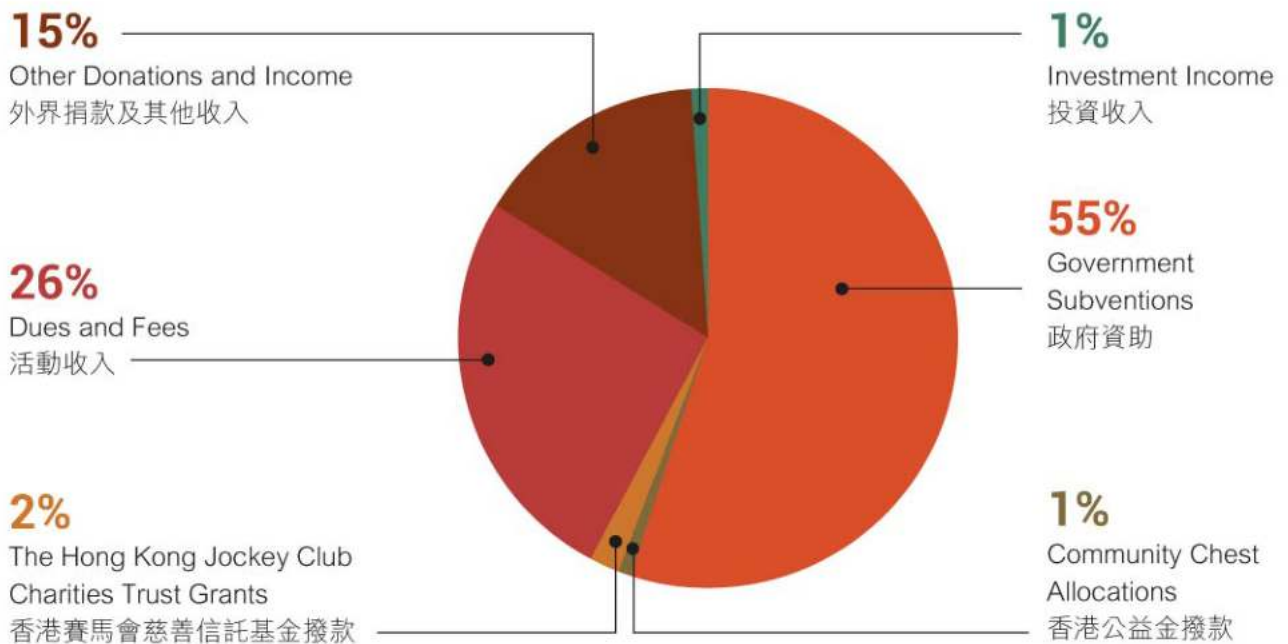
APPENDIX

Financial Highlights 財務摘要

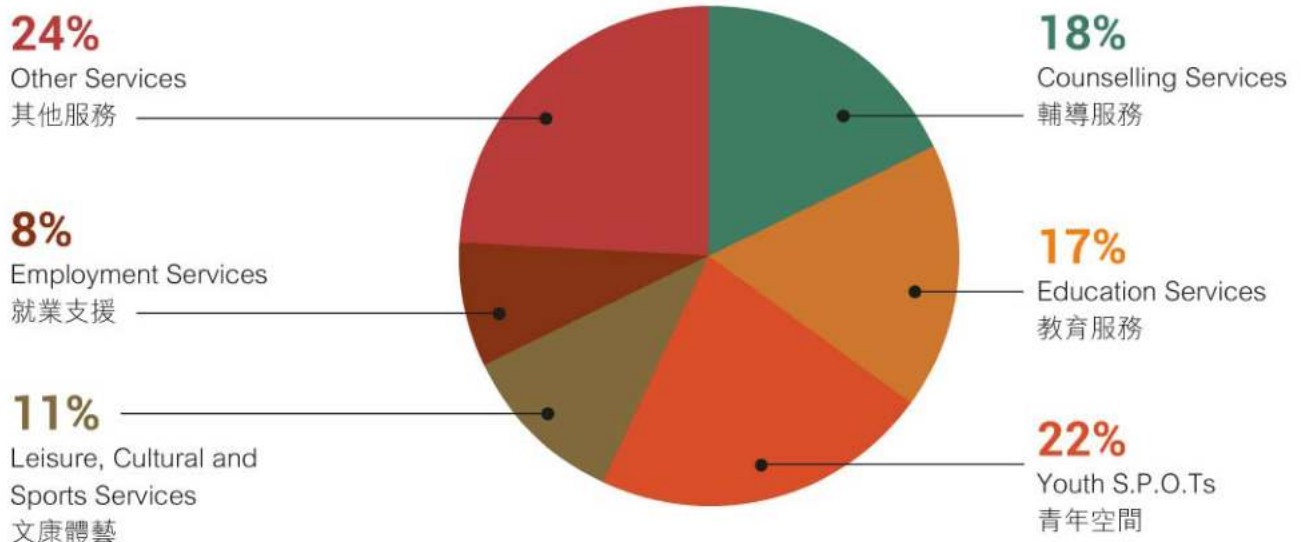
For the Year Ended 31 March 2022 (Consolidated)

截至2022年3月31日年度 (綜合)

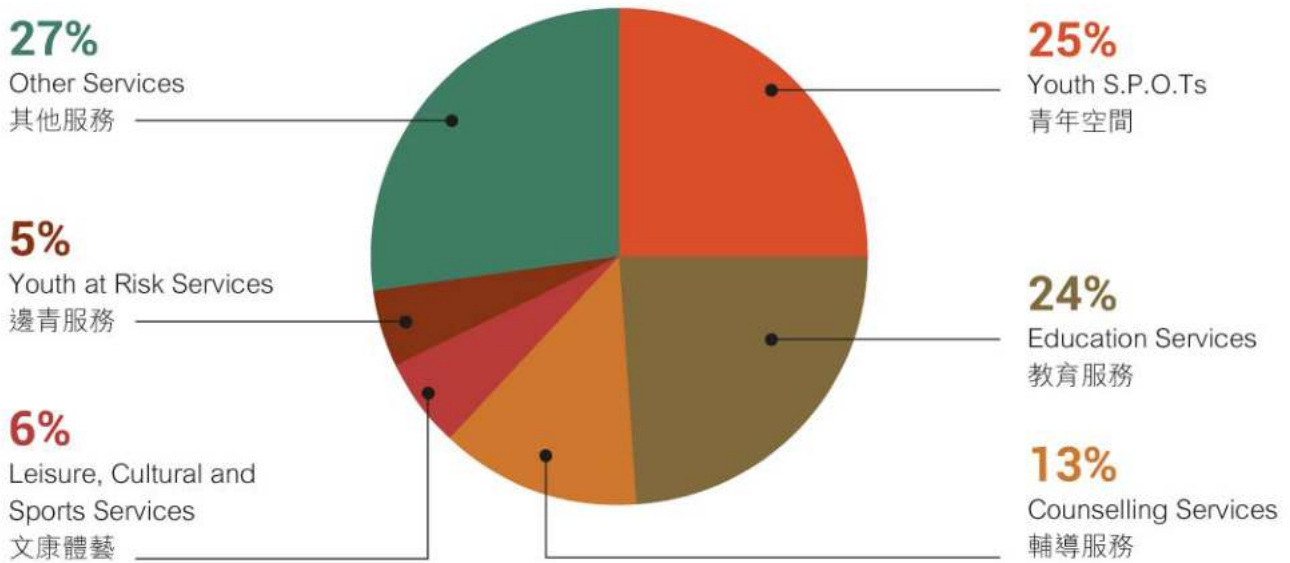
Analysis of Income 收入來源



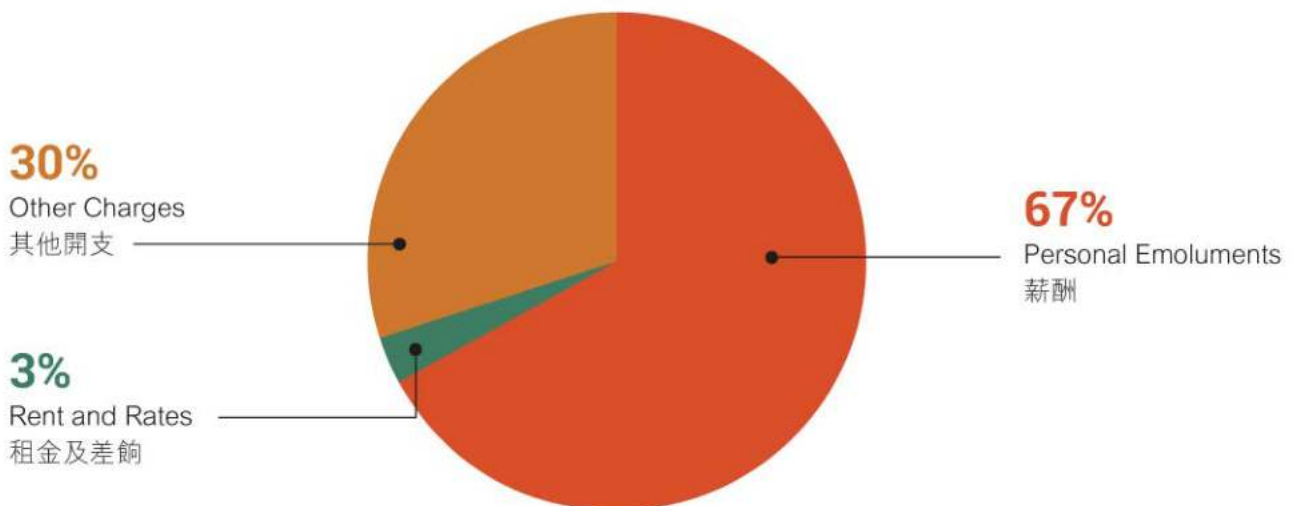
Income Generated by Service Units 按服務所得之收入



Operating Expenditure by Services 按服務所投放之開支



Operating Expenditure by Types 開支項目



Financial Highlights 財務摘要

The Hong Kong Federation of Youth Groups Statement of comprehensive income for the year ended 31 March 2022

香港青年協會 全面收入表

截至2022年3月31日年度

		2022 HK\$	2021 HK\$
Income	收入		
Government subvention	政府資助	304,458,199	318,016,616
Community Chest allocations	香港公益金撥款	6,923,303	6,460,190
The Hong Kong Jockey Club Charities Trust grants	香港賽馬會慈善信託基金撥款	24,557,502	25,555,819
Beat Drugs Fund recurrent grants allocation	禁毒基金經常性撥款	10,934,139	8,863,901
Quality Education Fund recurrent grants	優質教育基金經常性撥款	3,305,206	1,303,741
Dues and fees	活動收入	166,336,002	88,468,216
Other donations and income	外界捐款及其他收入	76,484,997	63,545,866
Interest income	利息收入	316,307	1,084,513
Dividend income	股息收入	1,103,983	1,434,928
Grants for capital expenditures	非經常性開支撥款	13,506,624	13,875,066
Net exchange gains	匯兌淨收益	-	95,492
Fair value gains on financial assets at fair value through profit or loss	按公允價值計入損益的 金融資產之價值增益	4,181,453	53,560,665
		612,107,715	582,265,013
Expenditure	支出		
Salaries and allowances	僱員薪酬及津貼	335,533,405	329,956,571
Retirement benefit costs	退休金供款	25,781,738	25,750,340
Short-term, low-value and variable lease expenses	短期、低價值及可變資產之租賃支出	2,611,046	2,438,076
Building management fees	物業管理費	4,607,604	4,665,370
Government rent	地租	899,878	745,248
Rates	差餉	2,529,315	2,247,974
Administrative expenses	行政支出	6,228,986	5,046,697
Utilities	公用事業支出	6,987,631	3,989,505
Stores and equipment	文儀及設備	12,875,892	13,007,233
Transport and travelling	運輸及交通	714,045	644,891
Staff amenities	職員福利	556,930	544,329
Audit fee	核數費用	711,200	800,336
Losses on disposal of property, plant and equipment	出售物業、機器及設備之虧損	66,128	14,998
Losses on lease modifications	租賃修改之虧損	-	10,061
Depreciation of property, plant and equipment	物業、機器及設備之折舊	24,288,682	25,932,584
Depreciation of right-of-use assets	使用權資產之折舊	11,668,533	10,675,627
Interest expenses on lease liabilities	租賃負債之利息	1,063,891	1,315,709
Programme expenses	活動支出	126,042,585	76,049,247
Miscellaneous expenses	雜項支出	3,607,933	3,874,489
Net exchange losses	匯兌淨虧損	60,959	-
		566,836,381	507,709,285
Surplus before other comprehensive income	其他全面收入前盈餘	45,271,334	74,555,728
Other comprehensive income for the year	年度其他全面收入	-	-
Surplus after other comprehensive income	其他全面收入後盈餘	45,271,334	74,555,728

**Statement on non-statutory accounts for
The Hong Kong Federation of Youth Groups
for the year ended 31 March 2022**

香港青年協會

截至2022年3月31日年度非法定帳目聲明

The above figures relating to the year ended 31 March 2022 are extracted from the financial statements of The Hong Kong Federation of Youth Groups (the "Federation"), but they do not constitute the Federation's statutory annual financial statements for that year. The financial statements are prepared in English, the Chinese translation is based on the English version. Where any discrepancy arises between the two versions, the English version shall prevail. Further information relating to those statutory financial statements required to be disclosed in accordance with section 436 of the Companies Ordinance is as follows:

The Federation will deliver those financial statements to the Registrar of Companies in due course as required by section 662(3) of, and Part 3 of Schedule 6 to, the Companies Ordinance.

The Federation's auditor has reported on those financial statements. The auditor's report was unqualified; did not include a reference to any matters to which the auditor drew attention by way of emphasis without qualifying its reports; and did not contain a statement under sections 406(2), 407(2) or (3) of the Companies Ordinance.

以上陳列的截至2022年3月31日年度的數字，雖然來源於香港青年協會相關年度的財務報表，但不構成香港青年協會就該年度的法定帳目。有關財務報表以英文編製，中文本乃根據英文本翻譯。如兩個版本有歧異，則以英文本為準。根據公司條例第436條要求披露的與這些法定帳目有關的更多信息如下：

香港青年協會將按照公司條例第662(3)條及附表6第3部的要求，按時向公司註冊處處長遞交有關帳目。

香港青年協會的核數師已就該帳目出具審計報告。該審計報告為無保留意見的審計報告；其中不包含審計師在不出具保留意見的情況下以強調的方式提請使用者注意的任何事項，亦不包含根據公司條例第406(2)，407(2)或(3)條作出的聲明。

**The Incorporated Management Committee of
HKFYG Lee Shau Kee Primary School
Statement of comprehensive income
for the year ended 31 August 2021**

香港青年協會李兆基小學法團校董會

全面收入表

截至2021年8月31日年度

		2021	2020
		HK\$	HK\$
Income	收入		
Government grants	政府資助	51,000,061	52,910,326
Fee collected from students	學生收費	225,835	252,960
Bank interest income	利息收入	596	9,640
Other donations	其他外界捐款	-	76,531
Income from sundry sales	銷售收入	260,033	353,122
Income from Quality Education Fund	優質教育基金撥款	385,325	1,489,042
Programme income	活動收入	29,359	736,691
Sundry income	其他收入	160,722	149,224
		52,061,931	55,977,536
Expenditure	支出	(51,328,359)	(53,655,129)
Total income less expenditure	年度盈餘	733,572	2,322,407
Other comprehensive income for the year	年度其他全面收入	-	-
Total comprehensive income for the year	年度總全面收入	733,572	2,322,407
Representing:	相當於：		
Accumulated fund	累積基金	(1,006,617)	(11,944)
Government grants reserve	政府資助儲備	(619,490)	1,664,839
Teaching and learning enhancement scheme	教與學增進計劃	(580,884)	(341,053)
Deferred capital reserve	非經常性遞延儲備	2,940,563	1,010,565
		733,572	2,322,407

HKFYG Lee Shau Kee College Limited
Statement of comprehensive income
for the year ended 31 August 2021

香港青年協會李兆基書院有限公司
全面收入表
截至2021年8月31日年度

		2021 HK\$	2020 HK\$
Income	收入		
Donations	外界捐款	498,831	379,511
Government subsidy	政府資助	55,693,376	57,009,549
Interest income	利息收入	215,711	950,367
School fees	學費	19,193,378	19,813,679
Sundry income	其他收入	420,082	879,336
Grants for capital expenditures	非經常性開支撥款	2,176,692	1,754,306
Quality Education Fund	優質教育基金	202,809	-
		<u>78,400,879</u>	<u>80,786,748</u>
Expenditure	支出	<u>(67,288,818)</u>	<u>(67,694,659)</u>
Total income less expenditure	年度盈餘	11,112,061	13,092,089
Other comprehensive income	其他全面收入	-	-
Total comprehensive income for the year	年度總全面收入	<u><u>11,112,061</u></u>	<u><u>13,092,089</u></u>
Representing:	相當於：		
Accumulated fund	累積基金	(6,106,623)	10,805,222
Deferred capital reserve	非經常性遞延儲備	2,214,684	9,867
Fee remission reserve	學費減免儲備	-	-
Reserve for construction, maintenance and upgrading of above-standard facilities	用作建設、維修及提升高於標準的設施的儲備	15,000,000	2,277,000
		<u><u>11,112,061</u></u>	<u><u>13,092,089</u></u>

Supervisory Staff List

Executive Director

Mr. Andy Ho Wing-cheong

B.Soc.Sc. (Hons.)(The Chinese University of Hong Kong)
M.A. (The Hong Kong Polytechnic University)
Dip. in Social Service Management
(The Chinese University of Hong Kong)
Registered Social Worker (Hong Kong)

Deputy Executive Director

Ms. Alice Lui Wai-lin

B.S.W. (Hons.)(The University of Hong Kong)
M.B.A. (The Hong Kong University of Science and Technology)
Registered Social Worker (Hong Kong)

Deputy Executive Director

Ms. Angela Ngai Mei-mui

M.Public Admin. (The University of Hong Kong)

Deputy Executive Director

Mr. Wilson Chan Man-ho

B.S.W. (Hons.)(City University of Hong Kong)
PgD in Psychology (City University of Hong Kong)
M.Soc.Sc. (The University of Hong Kong)
Registered Social Worker (Hong Kong)
Accredited Mediator (Hong Kong & China)

Deputy Executive Director

Ms. Hsu Siu-man

B.S.W. (Hons.)(Hong Kong Baptist University)
M.Soc.Sc. (City University of Hong Kong)
Registered Social Worker (Hong Kong)

Coordinator (Services)

Mr. Gary Tang Leung-shun

B.S.W. (Hons.)(The Hong Kong Polytechnic University)
M.Soc.Sc. (The University of Hong Kong)
Registered Social Worker (Hong Kong)

Coordinator (Financial Control)

Ms. Irene Ng Wai-ling

B.Soc.Sc. (Hons.)(The University of Hong Kong)
CPA FCCA

Head of Internal Audit

Ms. Clare Wong Wai-hang

B.B.A. (Hons.)(The Chinese University of Hong Kong)
M.Sc. (The University of Hong Kong)
CPA FCCA CIA

Supervisor (Youth S.P.O.Ts)

Ms. Carrie Wong Sau-ye

B.S.W. (Hons.)(City University of Hong Kong)
Registered Social Worker (Hong Kong)

Supervisor (Youth S.P.O.Ts)

Ms. Vicky Kwong Wing-ki

B.Soc.Sc. (Hons.)(The Chinese University of Hong Kong)
Registered Social Worker (Hong Kong)

Supervisor (Youth S.P.O.Ts)

Mr. Wu Wai-chuen

B.A. (Hons.)(The Hong Kong Polytechnic University)
M.Soc.Sc. (The Chinese University of Hong Kong)
Registered Social Worker (Hong Kong)

Supervisor (Innovation & Creativity)**Mr. Kenneth Lee Kin-lok**

B.Soc.Sc. (Hons.)(Hong Kong Baptist University)
Accredited Mediator (Hong Kong & China)

Supervisor (Leadership)**Ms. Miranda Wong Ho-ye**

B.Soc.Sc. (Hons.)(The University of Hong Kong)
M.Soc.Sc. (The Chinese University of Hong Kong)
M.B.A. (The University of Chicago Booth School of Business)

Supervisor (Corporate Planning & Publications)**Mr. William Chung Wai-lim**

B.A. (Hons.)(The Hong Kong Polytechnic University)
M.A. (The Chinese University of Hong Kong)

Supervisor (Youth Crime Prevention)**Ms. Bob Lee Siu-chui**

B.A. (Hons.)(City University of Hong Kong)
Registered Social Worker (Hong Kong)

Supervisor (Student Counselling)**Ms. Phoenix Ngai Mei-wah**

B.Soc.Sc. (Hons.)(The Chinese University of Hong Kong)
M.Soc.Sc. (The University of Hong Kong)
Dip. in Social Service Management
(The Chinese University of Hong Kong)
Registered Social Worker (Hong Kong)

Supervisor (Student Counselling)**Ms. Fanny Yu Yim-fong**

B.Soc.Sc. (Hons.)(The Chinese University of Hong Kong)
Registered Social Worker (Hong Kong)

Supervisor (Continuous Learning)**Mr. Choi Yu-sing**

B.A. (Hons.)(City University of Hong Kong)
M.Education (The Open University of Hong Kong)
Registered Social Worker (Hong Kong)

Supervisor (Sustainability & Camps)**Ms. Winky Ang Yim-mung**

B.Soc.Sc. (Hons.)(City University of Hong Kong)
M.Soc.Sc. (The University of Hong Kong)
Registered Social Worker (Hong Kong)

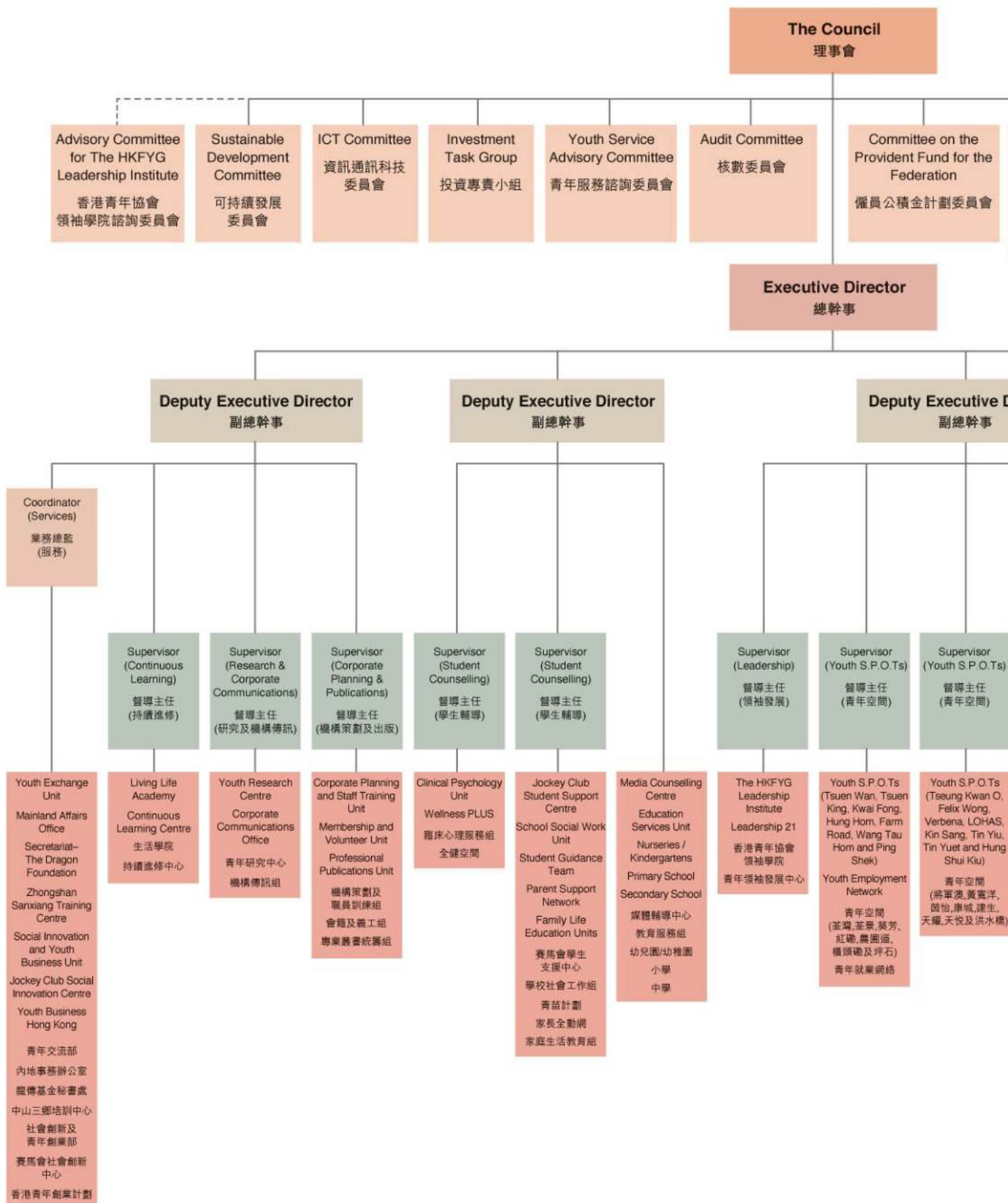
Supervisor (Sports & Social Enterprise)**Mr. James Wong Ting-bong**

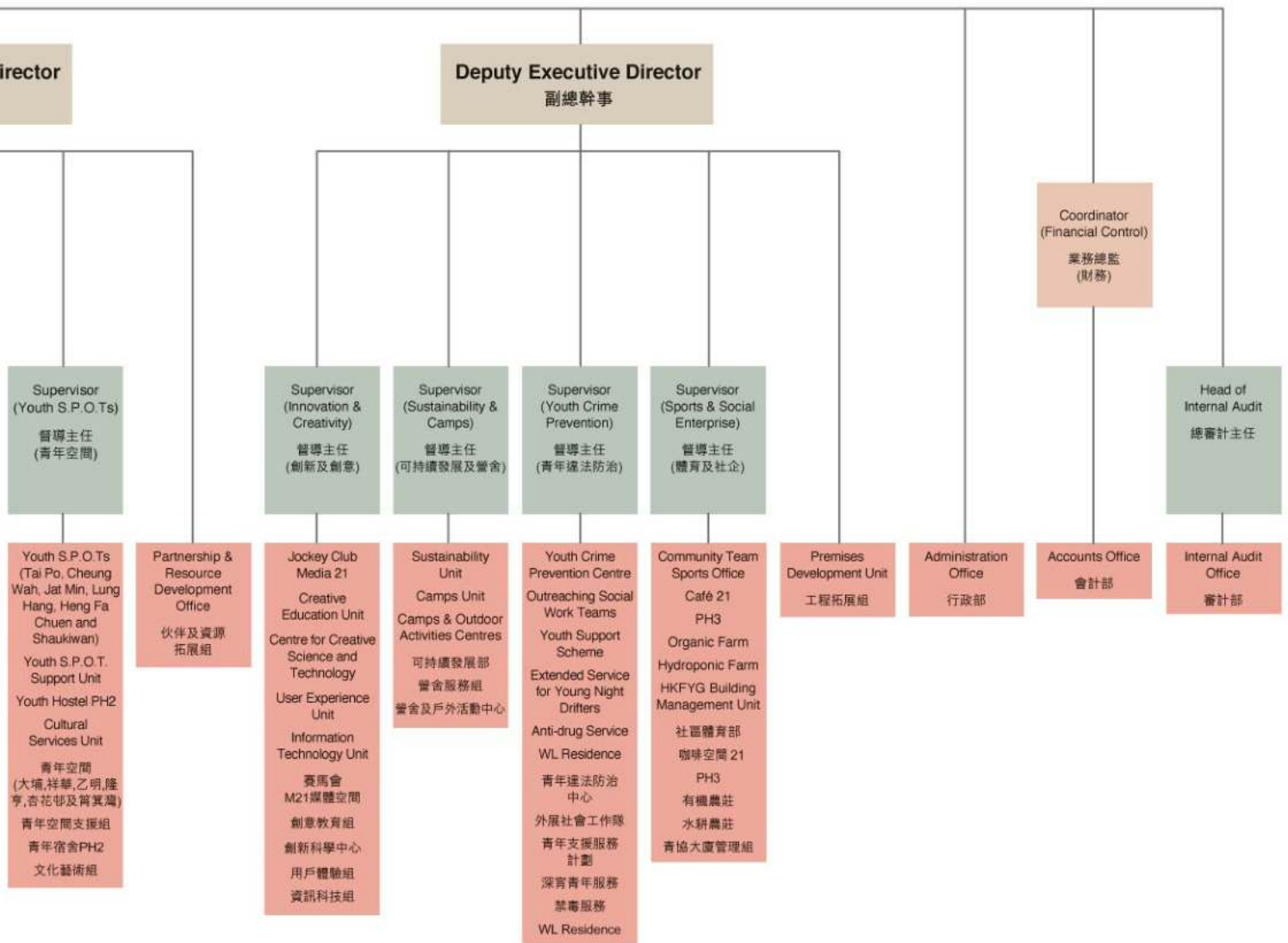
B.Soc.Sc. (Hons.)(City University of Hong Kong)
Registered Social Worker (Hong Kong)

Supervisor (Research & Corporate Communications)**Ms. Christa Cheung Shuk-fung**

B.S.W. (Hons.)(The University of Hong Kong)
Registered Social Worker (Hong Kong)

Organisational Chart 組織圖表





Office and Unit List

HKFYG Website: hkfyg.org.hk

M21 Multimedia Web: M21.hk

Head Office

Administration Office

21/F, The Hong Kong Federation of Youth Groups Building,
21 Pak Fuk Road, North Point, Hong Kong.

Tel: 2527 2448 | Fax: 2528 2105

Email: hq@hkfyg.org.hk

Accounts Office

21/F, The Hong Kong Federation of Youth Groups Building,
21 Pak Fuk Road, North Point, Hong Kong.

Tel: 2527 2448 | Fax: 2528 2105

Email: hq@hkfyg.org.hk

Internal Audit Office

21/F, The Hong Kong Federation of Youth Groups Building,
21 Pak Fuk Road, North Point, Hong Kong.

Tel: 2527 2448 | Fax: 2528 2105

Email: hq@hkfyg.org.hk

Information Technology Unit

21/F, The Hong Kong Federation of Youth Groups Building,
21 Pak Fuk Road, North Point, Hong Kong.

Tel: 2527 2448 | Fax: 2528 2105

Email: it@hkfyg.org.hk

Youth S.P.O.Ts

Youth S.P.O.T. 21

G-1/F, The Hong Kong Federation of Youth Groups
Building, 21 Pak Fuk Road, North Point, Hong Kong.

Tel: 3755 7021 | Fax: 3755 7031

Email: spot21@hkfyg.org.hk

Heng Fa Chuen Youth S.P.O.T.

G/F, Carpark Block West, 100 Shing Tai Road,
Heng Fa Chuen, Chai Wan, Hong Kong.

Tel: 2557 0142 | Fax: 2898 2595

Email: hfc@hkfyg.org.hk

Jockey Club Shaukiwan Youth S.P.O.T.

1-2/F, Perfect Mount Garden, 1 Po Man Street,
Shau Ki Wan, Hong Kong.

Tel: 2885 9353 | Fax: 2884 3353

Email: sw@hkfyg.org.hk

Jockey Club Hung Hom Youth S.P.O.T.

3-5/F, Ka Hing Lau, Ka Wai Chuen,
48 Ma Tau Wai Road, Hung Hom, Kowloon.

Tel: 2774 5300 | Fax: 2330 7685

Email: hhit@hkfyg.org.hk

Jockey Club Farm Road Youth S.P.O.T.

G/F, 11 Farm Road, To Kwa Wan, Kowloon.

Tel: 2715 0424 | Fax: 2624 4170

Email: fr@hkfyg.org.hk

Jockey Club Wang Tau Hom Youth S.P.O.T.

G/F, Wang Kwong House, Wang Tau Hom Estate,
Wong Tai Sin, Kowloon.

Tel: 2337 7189 | Fax: 2337 1558

Email: wth@hkfyg.org.hk

Jockey Club Ping Shek Youth S.P.O.T.

Lower Ground Floor, Restaurant Block, Ping Shek Estate,
Kwun Tong, Kowloon.

Tel: 2325 2383 | Fax: 2351 8941

Email: ps@hkfyg.org.hk

Jockey Club Tseung Kwan O Youth S.P.O.T.

G/F, Ming Kok House, Ming Tak Estate,
Tseung Kwan O, New Territories.

Tel: 2623 3121 | Fax: 2623 6121

Email: tkoit@hkfyg.org.hk

LOHAS Youth S.P.O.T.

The Capitol, LOHAS Park, 1 Lohas Park Road,
Sai Kung, New Territories.

Tel: 2702 2202 | Fax: 2706 0711

Email: ls@hkfyg.org.hk

Felix Wong Youth S.P.O.T.

G/F, Tak On House, Hau Tak Estate,
Tseung Kwan O, New Territories.
Tel: 2706 2638 | Fax: 2706 7396
Email: fw@hkfyg.org.hk

Jockey Club Verbena Youth S.P.O.T.

Podium Level 1 and 2, Block 2, Verbena Heights,
8 Mau Tai Road, Tseung Kwan O, New Territories.
Tel: 2997 0321 | Fax: 2997 0290
Email: vb@hkfyg.org.hk

Jockey Club Jat Min Youth S.P.O.T.

G-1/F, 13 Jat Min Chuen Street, Jat Min Chuen,
Sha Tin, New Territories.
Tel: 2647 0744 | Fax: 2647 4660
Email: jm@hkfyg.org.hk

Lung Hang Youth S.P.O.T.

3/F & 5/F, Lung Hang Estate Community Centre,
Lung Hang Estate, 1 Tin Sam Street, Sha Tin, New Territories.
Tel: 2698 5565 | Fax: 2602 8484
Email: lh@hkfyg.org.hk

Tai Po Youth S.P.O.T.

2 Po Heung Street, Tai Po, New Territories.
Tel: 2656 3257 | Fax: 2638 0393
Email: tp@hkfyg.org.hk

Jockey Club Cheung Wah Youth S.P.O.T.

Units 317-332, Cheung Lai House, Cheung Wah Estate,
Fan Ling, New Territories.
Tel: 2669 9111 | Fax: 2669 8633
Email: chw@hkfyg.org.hk

Jockey Club Kwai Fong Youth S.P.O.T.

G/F, Kwai Ching House, Kwai Fong Estate,
Kwai Chung, New Territories.
Tel: 2423 1366 | Fax: 2422 2717
Email: kfit@hkfyg.org.hk

Tsuen Wan Youth S.P.O.T.

2/F, Commercial Complex, Clague Garden Estate,
Hoi Shing Road, Tsuen Wan, New Territories.
Tel: 2413 6669 | Fax: 2413 3005
Email: tw@hkfyg.org.hk

Tsuen King Youth S.P.O.T.

G-1/F, Block 10, Tsuen King Garden,
76-84 Tsuen King Circuit, Tsuen Wan, New Territories.
Tel: 2498 3333 | Fax: 2412 5687
Email: tk@hkfyg.org.hk

Jockey Club Kin Sang Youth S.P.O.T.

G/F, Shun Sang House, Siu Hin Court,
Tuen Mun, New Territories.
Tel: 2467 7933 | Fax: 2462 4001
Email: ks@hkfyg.org.hk

Jockey Club Tin Yiu Youth S.P.O.T.

2-4/F, Tin Yiu Community Centre, Tin Yiu Estate,
Tin Shui Wai, Yuen Long, New Territories.
Tel: 2445 4868 | Fax: 2445 4049
Email: ty@hkfyg.org.hk

Jockey Club Tin Yuet Youth S.P.O.T.

2/F, Ancillary Facilities Block, Tin Yuet Estate,
Tin Shui Wai, Yuen Long, New Territories.
Tel: 2445 5777 | Fax: 2445 5656
Email: tyt@hkfyg.org.hk

Hung Shui Kiu Youth S.P.O.T.

Shop 1, G/F, Hung Yat House, Hung Fuk Estate,
Yuen Long, New Territories.
Tel: 2448 7474 | Fax: 2447 8758
Email: hsk@hkfyg.org.hk

M21 Multimedia Services

Jockey Club Media 21

Unit No.2, LG2/F, Shek Pai Wan Shopping Centre,
Aberdeen, Hong Kong.

Tel: 3979 0000 | Fax: 3979 0099

Email: enquiry@m21.hk

Employment Services

Youth Employment Network

Units 7-10, G/F, Wing Lok House, Fuk Loi Estate,
Tsuen Wan, New Territories.

Tel: 3113 7999 | Fax: 3170 6173

Email: yen@hkfyg.org.hk

Social Innovation and Youth Business Unit

Units B, C, D & E, 11/F, Genesis,
33-35 Wong Chuk Hang Road, Hong Kong.

Tel: 3595 0945 | Fax: 3956 8005

Email: sic@hkfyg.org.hk

Jockey Club Social Innovation Centre

Units B, C, D & E, 11/F, Genesis,
33-35 Wong Chuk Hang Road, Hong Kong.

Tel: 3595 0945 | Fax: 3956 8005

Email: sic@hkfyg.org.hk

Youth Business Hong Kong

Units B, C, D & E, 11/F, Genesis,
33-35 Wong Chuk Hang Road, Hong Kong.

Tel: 3595 0945 | Fax: 3956 8005

Email: ybhk@hkfyg.org.hk

Leadership Training

The HKFYG Leadership Institute

302 Jockey Club Road, Fanling, New Territories.

Tel: 2169 0255 | Fax: 2169 0603

Email: info@leadershipinstitute.hk

Leadership 21

302 Jockey Club Road, Fanling, New Territories.

Tel: 2169 0255 | Fax: 2169 0603

Email: leadership21@hkfyg.org.hk

Volunteer Services

Membership and Volunteer Unit

Unit C, 29/F, Monterey Plaza, 15 Chong Yip Street,
Kwun Tong, Kowloon.

Tel: 3691 0200 | Email: membership@hkfyg.org.hk

Youth Volunteer Network

Unit C, 29/F, Monterey Plaza, 15 Chong Yip Street,
Kwun Tong, Kowloon.

Tel: 3691 0200 | Email: yvn@hkfyg.org.hk

Open Up Volunteer Centre

Website: www.openup.hk

Youth at Risk Services

Youth Crime Prevention Centre

Hotline: 8100 9669 | Email: ycpc@hkfyg.org.hk

Tsuen Wan and Kwai Chung

Outreaching Social Work Team

Units 109-112, G/F, Fu Kwai House, Tai Wo Hau Estate,
Kwai Chung, New Territories.

Tel: 2487 6151 | Fax: 2423 8186

Email: osw-tk1@hkfyg.org.hk

Sai Kung and Wong Tai Sin

Outreaching Social Work Team

Units 320-322, Po Ning House, Po Lam Estate,
Tseung Kwan O, New Territories.

Tel: 2701 8866 | Fax: 2706 2206

Email: osw-skwts@hkfyg.org.hk

Extended Service for Young Night Drifters

LOHAS Youth S.P.O.T., The Capitol, LOHAS Park,
1 Lohas Park Road, Sai Kung, New Territories.

Tel: 2702 2202 | Fax: 2706 0711

Email: ynd@hkfyg.org.hk

Youth Support Scheme

2/F, Butterfly Bay Community Centre, Butterfly Estate,
Tuen Mun, New Territories.

Tel: 2396 4711 | Fax: 2395 9543

Email: yss@hkfyg.org.hk

Anti-drug Service

2/F, Butterfly Bay Community Centre, Butterfly Estate,
Tuen Mun, New Territories.

Tel: 2473 0133 | Fax: 2473 0181

Email: ad@hkfyg.org.hk

Counselling Services**Clinical Psychology Unit**

1/F, The Hong Kong Federation of Youth Groups Building,
21 Pak Fuk Road, North Point, Hong Kong.

Tel: 3755 7021 | Fax: 3755 7031

Email: wp@hkfyg.org.hk

Wellness PLUS (Hong Kong)

1/F, The Hong Kong Federation of Youth Groups Building,
21 Pak Fuk Road, North Point, Hong Kong.

Tel: 3755 7021 | Fax: 3755 7031

Email: wp@hkfyg.org.hk

Wellness PLUS (Kowloon)

1/F, 54 Bedford Road, Tai Kok Tsui, Kowloon.

Tel: 3422 3161 | Fax: 3422 3165

Email: wmc@hkfyg.org.hk

Wellness PLUS (New Territories West)

3/F, Commercial Complex, Clague Garden Estate,
Hoi Shing Road, Tsuen Wan, New Territories.

Tel: 3755 7021 | Fax: 3755 7031

Email: wp@hkfyg.org.hk

Wellness PLUS (New Territories East)

Units 317-332, Cheung Lai House, Cheung Wah Estate,
Fan Ling, New Territories.

Tel: 3755 7021 | Fax: 3755 7031

Email: wp@hkfyg.org.hk

Jockey Club Student Support Centre

G-1/F and 4-5/F, 54 Bedford Road, Tai Kok Tsui, Kowloon.

Tel: 3422 3161 | Fax: 3422 3165

Email: ssc@hkfyg.org.hk

School Social Work Unit

21/F, The Hong Kong Federation of Youth Groups Building,
21 Pak Fuk Road, North Point, Hong Kong.

Tel: 2395 0161 | Fax: 2395 8592

Email: ssw@hkfyg.org.hk

Student Guidance Team (Primary School)

4/F, 54 Bedford Road, Tai Kok Tsui, Kowloon.

Tel: 2395 0162 | Fax: 2787 1479

Email: sgt@hkfyg.org.hk

Student Guidance Team (Kindergarten)

4/F, 54 Bedford Road, Tai Kok Tsui, Kowloon.

Tel: 2395 0162 | Fax: 2787 1479

Email: sgt@hkfyg.org.hk

Media Counselling Centre

G/F, 54 Bedford Road, Tai Kok Tsui, Kowloon.

Tel: 2788 3433 | Fax: 2776 2125

Email: mcc@hkfyg.org.hk

Media Counselling Centre (Youthline)

Hotline: 2777 8899

Media Counselling Centre (Open Up)

Website: www.openup.hk

Media Counselling Centre (uTouch)

3/F, Commercial Complex, Clague Garden Estate,
Hoi Shing Road, Tsuen Wan, New Territories.

Tel: 2788 3444 | Fax: 2776 2125

Email: utouch@hkfyg.org.hk

Education Services

Education Services Unit

21/F, The Hong Kong Federation of Youth Groups Building,
21 Pak Fuk Road, North Point, Hong Kong.

Tel: 3755 7107 | Fax: 3755 7155

Email: education@hkfyg.org.hk

Ching Lok Kindergarten/Ching Lok Nursery

G/F, Lee Ga Building, 129 Sai Wan Ho Street,
Sai Wan Ho, Hong Kong.

Tel: 2886 8856 | Fax: 2886 8923

Email: cl-swh@hkfyg.org.hk

Ching Lok Kindergarten (Yaumatei) /

Ching Lok Nursery (Yaumatei)

Shops 8-13, Boss Commercial Centre, 28 Ferry Street,
Yau Ma Tei, Kowloon.

Tel: 2385 6868 | Fax: 2385 6630

Email: cl-ymt@hkfyg.org.hk

KK Cheng Kindergarten

Shop 1, Choi Shing House, Choi Tak Estate,
8 Choi Hing Road, Ngau Tau Kok, Kowloon.

Tel: 2385 2622 | Fax: 2385 3326

Email: kkc@hkfyg.org.hk

Lee Shau Kee Primary School

11 Tin Wing Road, Tin Shui Wai, Yuen Long,
New Territories.

Tel: 2448 1011 | Fax: 2448 1823

Email: lskps@hkfyg.org.hk

Lee Shau Kee College

12 Tin Kwai Road, Tin Shui Wai, Yuen Long,
New Territories.

Tel: 2146 1128 | Fax: 2146 1662

Email: hlc@hlc.edu.hk

Continuous Learning Centre

21-23/F, Congregation House, 119 Leighton Road,
Causeway Bay, Hong Kong.

Tel: 2130 4000 | Fax: 2130 4030

Email: clc@hkfyg.org.hk

Living Life Academy

21-23/F, Congregation House, 119 Leighton Road,
Causeway Bay, Hong Kong.

Tel: 2130 4000 | Fax: 2130 4030

Email: lla@hkfyg.org.hk

Parenting Services

Parent Support Network

Units 125-132, G/F, Tsui Shek House, Ping Shek Estate,
Kwun Tong, Kowloon.

Tel: 2402 9230 | Fax: 2402 9295

Email: psn@hkfyg.org.hk

Family Life Education Unit (Eastern/Wanchai District)

Jockey Club Shaukiwan Youth S.P.O.T.,
1-2/F, Perfect Mount Garden, 1 Po Man Street,
Shau Ki Wan, Hong Kong.

Tel: 2567 5730 | Fax: 2884 3353

Email: psn-ew@hkfyg.org.hk

Family Life Education Unit (Kowloon City District)

Jockey Club Hung Hom Youth S.P.O.T., 3-5/F, Ka Hing Lau,
Ka Wai Chuen, 48 Ma Tau Wai Road, Hung Hom, Kowloon.
Tel: 2774 3083 | Fax: 2330 7685
Email: psn-knc@hkfyg.org.hk

Family Life Education Unit (Tai Po/North District)

Jockey Club Cheung Wah Youth S.P.O.T.,
Units 317-332, Cheung Lai House, Cheung Wah Estate,
Fan Ling, New Territories.
Tel: 2658 3097 | Fax: 2669 8633
Email: psn-tpn@hkfyg.org.hk

**Family Life Education Unit
(Tsuen Wan/Kwai Tsing District)**

Tsuen Wan Youth S.P.O.T.,
2/F, Commercial Complex, Clague Garden Estate,
Hoi Shing Road, Tsuen Wan, New Territories.
Tel: 2490 2662 | Fax: 2413 3005
Email: psn-twkt@hkfyg.org.hk

Creativity Education and Youth Exchange**Creative Education Unit**

Unit 211, 2/F, 5W, Hong Kong Science Park,
Pak Shek Kok, New Territories.
Tel: 2561 6149 | Fax: 2565 8345
Email: ce@hkfyg.org.hk

Centre for Creative Science and Technology

Unit 211, 2/F, 5W, Hong Kong Science Park,
Pak Shek Kok, New Territories.
Tel: 2561 6149 | Fax: 2565 8345
Email: ce@hkfyg.org.hk

Youth Exchange Unit

302 Jockey Club Road, Fanling, New Territories.
Tel: 3586 8448 | Fax: 3586 8311
Email: ye@hkfyg.org.hk

Mainland Affairs Office

302 Jockey Club Road, Fanling, New Territories.
Tel: 3705 1501 | Fax: 3956 8005
Email: mao@hkfyg.org.hk

Zhongshan Sanxiang Youth Training Centre

No.2 Mansion, 21 Xuetao Lane, Yongmo Village,
Sanxiang Town, Zhongshan Province,
People's Republic of China.
Tel: 3586 8448 | Fax: 3586 8311
Email: ye@hkfyg.org.hk

Leisure, Cultural and Sports Services**Cultural Services Unit**

2/F, The HKFYG Youth Hostel PH2,
2 Po Heung Street, Tai Po, New Territories.
Tel: 2395 5753 | Fax: 2638 0393
Email: csu@hkfyg.org.hk

Community Team Sports Office

3/F, Commercial Complex, Clague Garden Estate,
Hoi Shing Road, Tsuen Wan, New Territories.
Tel: 3611 6670 | Fax: 3108 4668
Email: cts@hkfyg.org.hk

Tsuen Wan Indoor Sports Centre

3/F, Commercial Complex, Clague Garden Estate,
Hoi Shing Road, Tsuen Wan, New Territories.
Tel: 2413 6669 | Fax: 2413 3005
Email: twisc@hkfyg.org.hk

Camps Unit

Tai Mong Tsai, Sai Kung, New Territories.
Tel: 2395 5759 | Fax: 2664 4776
Email: camp@hkfyg.org.hk

Jockey Club Sai Kung Outdoor Training Camp

Tai Mong Tsai, Sai Kung, New Territories.

Tel: 2792 2727 | Fax: 2792 6363

Email: otc@hkfyg.org.hk

Lamma Youth Camp

P.O. Box 32, Yung Shue Wan, Lamma Island.

Tel: 2982 1929 | Fax: 2982 1907

Email: lyc@hkfyg.org.hk

Jockey Club Stanley Outdoor Training Camp

Stanley Bay, Hong Kong

Tel: 2813 8886 | Fax: 2664 4776

Email: s@hkfyg.org.hk

Tai Mei Tuk Outdoor Activities Centre

Main Dam, Plover Cove, Ting Kwok Road,

Tai Po, New Territories.

Tel: 2664 4686 | Fax: 2664 4776

Email: tmt@hkfyg.org.hk

The HKFYG Leadership Institute – Lodge

302 Jockey Club Road, Fanling, New Territories.

Tel: 2169 0255 | Fax: 2169 0603

Email: info@leadershipinstitute.hk

Research and Publications

Youth Research Centre

4/F, The Hong Kong Federation of Youth Groups Building,

21 Pak Fuk Road, North Point, Hong Kong.

Tel: 3755 7022 | Fax: 3755 7200

Email: yr@hkfyg.org.hk

Professional Publications Unit

21/F, The Hong Kong Federation of Youth Groups Building,

21 Pak Fuk Road, North Point, Hong Kong.

Tel: 3755 7108 | Fax: 3755 7155

Email: cps@hkfyg.org.hk

Special Services

The HKFYG Youth Hostel PH2

2 Po Heung Street, Tai Po, New Territories.

Tel: 2656 0009 | Fax: 2638 0393

Email: ph2@hkfyg.org.hk

WL Residence

5 and 7-9 Wing Lee Street, Sheung Wan, Hong Kong.

Tel: 2915 5532 | Email: wlr@hkfyg.org.hk

Café 21

G/F, The Hong Kong Federation of Youth Groups Building,

21 Pak Fuk Road, North Point, Hong Kong.

Tel: 3188 5792 | Fax: 3188 5793

Email: cafe21@hkfyg.org.hk

PH3

3/F, No.186, 188 & 190, Queen's Road East,

Wan Chai, Hong Kong

Tel: 5933 6323 | Email: ph3@hkfyg.org.hk

Organic Farm

No.1 Family Walk, Ho Pui Reservoir, Pat Heung,

Yuen Long, New Territories.

Tel: 2838 4808 | Fax: 2488 9034

Email: organicfarm@hkfyg.org.hk

Hydroponic Farm

DD7, Lot1 RP1, Tai Hang Sha Lay Yuen,

Tai Wo Service Road West, Tai Po, New Territories.

Tel: 9333 2551 | Email: hf@hkfyg.org.hk

The Dragon Foundation Secretariat

302 Jockey Club Road, Fanling, New Territories.

Tel: 2811 2779 | Fax: 2811 2669

Email: info@dragonfoundation.net

Development and Support

Partnership and Resource Development Office

21/F, The Hong Kong Federation of Youth Groups Building,
21 Pak Fuk Road, North Point, Hong Kong.
Tel: 3755 7103 | Fax: 3755 7155
Email: partnership@hkfyg.org.hk

Corporate Planning and Staff Training Unit

20/F, The Hong Kong Federation of Youth Groups Building,
21 Pak Fuk Road, North Point, Hong Kong.
Tel: 3755 7088 | Fax: 3755 7055
Email: td@hkfyg.org.hk ; cp@hkfyg.org.hk

Corporate Communications Office

21/F, The Hong Kong Federation of Youth Groups Building,
21 Pak Fuk Road, North Point, Hong Kong.
Tel: 3755 7022 | Fax: 3755 7200
Email: cco@hkfyg.org.hk

Sustainability Unit

21/F, The Hong Kong Federation of Youth Groups Building,
21 Pak Fuk Road, North Point, Hong Kong.
Tel: 3755 7110 | Fax: 3755 7155
Email: sst@hkfyg.org.hk

Youth S.P.O.T. Support Unit

20/F, The Hong Kong Federation of Youth Groups Building,
21 Pak Fuk Road, North Point, Hong Kong.
Tel: 3755 7072 | Fax: 3755 7055
Email: spot@hkfyg.org.hk

User Experience Unit

Unit No.2, LG2/F, Shek Pai Wan Shopping Centre,
Aberdeen, Hong Kong.
Tel: 3905 1546 | Email: ue@hkfyg.org.hk

Premises Development Unit

21/F, The Hong Kong Federation of Youth Groups Building,
21 Pak Fuk Road, North Point, Hong Kong.
Tel: 3755 7092 | Fax: 3755 7155
Email: pd@hkfyg.org.hk

HKFYG Building Management Unit

21/F, The Hong Kong Federation of Youth Groups Building,
21 Pak Fuk Road, North Point, Hong Kong.
Tel: 3755 7098 | Fax: 3755 7155
Email: bm@hkfyg.org.hk

Office and Unit Locations 辦事處及服務單位分布圖



Head Office

總辦事處

Administration Office 行政部
Accounts Office 會計部
Internal Audit Office 審計部
Information Technology Unit 資訊科技組

Youth S.P.O.Ts 青年空間

- 1 Youth S.P.O.T. 21 青年空間21
- 2 Heng Fa Chuen Youth S.P.O.T. 杏花邨青年空間
- 3 Jockey Club Shaukiwan Youth S.P.O.T. 賽馬會筲箕灣青年空間
- 4 Jockey Club Hung Hom Youth S.P.O.T. 賽馬會紅磡青年空間
- 5 Jockey Club Farm Road Youth S.P.O.T. 賽馬會農圃道青年空間
- 6 Jockey Club Wang Tau Hom Youth S.P.O.T. 賽馬會橫頭磡青年空間
- 7 Jockey Club Ping Shek Youth S.P.O.T. 賽馬會坪石青年空間
- 8 Jockey Club Tseung Kwan O Youth S.P.O.T. 賽馬會將軍澳青年空間
- 9 LOHAS Youth S.P.O.T. 康城青年空間
- 10 Felix Wong Youth S.P.O.T. 黃寬洋青年空間
- 11 Jockey Club Verbena Youth S.P.O.T. 賽馬會茵怡青年空間
- 12 Jockey Club Jat Min Youth S.P.O.T. 賽馬會乙明青年空間
- 13 Lung Hang Youth S.P.O.T. 隆亨青年空間
- 14 Tai Po Youth S.P.O.T. 大埔青年空間
- 15 Jockey Club Cheung Wah Youth S.P.O.T. 賽馬會祥華青年空間
- 16 Jockey Club Kwai Fong Youth S.P.O.T. 賽馬會葵芳青年空間
- 17 Tsuen Wan Youth S.P.O.T. 荃灣青年空間
- 18 Tsuen King Youth S.P.O.T. 荃景青年空間
- 19 Jockey Club Kin Sang Youth S.P.O.T. 賽馬會建生青年空間
- 20 Jockey Club Tin Yiu Youth S.P.O.T. 賽馬會天耀青年空間
- 21 Jockey Club Tin Yuet Youth S.P.O.T. 賽馬會天悅青年空間
- 22 Hung Shui Kiu Youth S.P.O.T. 洪水橋青年空間

M21 Multimedia Services M21媒體服務

- M Jockey Club Media 21 賽馬會Media 21媒體空間

Employment Services 青年就業

- 1 Youth Employment Network 青年就業網絡
- 2 Social Innovation and Youth Business Unit 社會創新及青年創業部
Jockey Club Social Innovation Centre 賽馬會社會創新中心
Youth Business Hong Kong 香港青年創業計劃

Leadership Training 領袖培訓

- L The HKFYG Leadership Institute 香港青年協會領袖學院
Leadership 21 青年領袖發展中心

Volunteer Services 義工服務

- V Membership and Volunteer Unit 會籍及義工組
Youth Volunteer Network 青年義工網絡

Youth at Risk Services 選青服務

- 1 Tsuen Wan and Kwai Chung Outreaching Social Work Team 荃灣及葵涌外展社會工作隊
- 2 Sai Kung and Wong Tai Sin Outreaching Social Work Team 西貢及黃大仙外展社會工作隊
- 3 Extended Service for Young Night Drifters 深宵青年服務
- 4 Youth Support Scheme 青年支援服務計劃
Anti-drug Service 抗毒服務

Counselling Services 輔導服務

- 1 Jockey Club Student Support Centre 賽馬會學生支援中心
Wellness PLUS (Kowloon) 全健空間 (九龍)
Student Guidance Team 青苗計劃
Media Counselling Centre 媒體輔導中心
- 2 Clinical Psychology Unit 臨床心理服務組
Wellness PLUS (Hong Kong) 全健空間 (香港)
School Social Work Unit 學校社會工作組
- 3 Media Counselling Centre (uTouch) 媒體輔導中心 (uTouch網上青年外展服務)
- 4 Wellness PLUS (New Territories West) 全健空間 (新界西)
- 5 Wellness PLUS (New Territories East) 全健空間 (新界東)

Education Services 教育服務

- 1 Education Services Unit 教育服務組
- 2 Ching Lok Kindergarten / Nursery 青樂幼稚園 / 幼兒園
- 3 Ching Lok Kindergarten / Nursery (Yaumatei) 青樂幼稚園 / 幼兒園 (油麻地)
- 4 KK Cheng Kindergarten 鄭堅固幼稚園
- 5 Lee Shau Kee Primary School 李兆基小學
- 6 Lee Shau Kee College 李兆基書院
- 7 Continuous Learning Centre 持續進修中心
Living Life Academy 生活學院

Parenting Services 家長服務

- 1 Parent Support Network 家長全動網
- 2 Family Life Education Unit (Eastern / Wanchai District) 家庭生活教育組 (東區及灣仔)
- 3 Family Life Education Unit (Kowloon City District) 家庭生活教育組 (九龍城區)
- 4 Family Life Education Unit (Tai Po / North District) 家庭生活教育組 (大埔及北區)
- 5 Family Life Education Unit (Tsuen Wan / Kwai Tsing District) 家庭生活教育組 (荃灣及葵青區)





Creativity Education and Youth Exchange 創意交流

- 1 Creative Education Unit 創意教育組
Centre for Creative Science and Technology 創新科學中心
- 2 Youth Exchange Unit 青年交流部
Mainland Affairs Office 內地事務辦公室

Leisure, Cultural and Sports Services 文康體藝

- 1 Cultural Services Unit 文化藝術組
- 2 Community Team Sports Office 社區體育部
Tsuen Wan Indoor Sports Centre 荃灣室內體育中心
- 3 Camps Unit 營舍服務組
Jockey Club Sai Kung Outdoor Training Camp 賽馬會西貢戶外訓練營
- 4 Lamma Youth Camp 南丫青年營
- 5 Jockey Club Stanley Outdoor Training Camp 賽馬會赤柱戶外訓練營
- 6 Tai Mei Tuk Outdoor Activities Centre 大美督戶外活動中心

Research and Publications 研究出版

- R Youth Research Centre 青年研究中心
- P Professional Publications Unit 專業叢書統籌組

Special Services 專項服務

- 1 The HKFYG Youth Hostel PH2 香港青年協會青年宿舍PH2
- 2 WL Residence
- 3 Café 21 咖啡空間21
- 4 PH3
- 5 Organic Farm 有機農莊
- 6 Hydroponic Farm 水耕農莊
- 7 The Dragon Foundation Secretariat 龍傳基金秘書處



Development and Support 拓展與支援

- Partnership and Resource Development Office 伙伴及資源拓展組
- Corporate Planning and Staff Training Unit 機構策劃及職員訓練組
- Corporate Communications Office 機構傳訊組
- Sustainability Unit 可持續發展部
- Youth S.P.O.T. Support Unit 青年空間支援組
- U User Experience Unit 用戶體驗組
- Premises Development Unit 工程拓展組
- HKFYG Building Management Unit 青協大廈管理組



Donation / Sponsorship Form 捐款表格

Please tick (✓) boxes as appropriate 請於合適選項格內，加上“✓”：
I am / My organisation is interested in donating 本人/本機構 願意捐助

- HK\$10,000 HK\$5,000 HK\$2,000
 HK\$1,000 HK\$800 HK\$500
 HK\$200 Other 其他 HK\$ _____

Receipts will be issued for all donations over HK\$100 and are tax-deductible.
所有港幣100元以上捐款，將獲發收據作申請扣稅之用。

Cheque 支票

Cheque No. 支票號碼 _____

Crossed cheques should be made payable to: **The Hong Kong Federation of Youth Groups**
劃線支票抬頭祈付：香港青年協會

Direct Transfer 銀行轉賬

Direct transfer to the **Hang Seng Bank, account no.**

存款予本會恒生銀行賬戶：773-027743-001

Internet Banking “Bill Payment” or “Charity Donation” Services

本地銀行網上理財「繳費」或「慈善捐款」

Date of Payment 轉賬日期 _____

Please use your contact number as the bill account number (if applicable). If you need a receipt, please send us the bank's receipt / transaction record together with this form. 請以您的電話號碼作為賬單/賬戶號碼(如適用)，並將存款證明/交易紀錄連同本表格交回。

Monthly direct debit (We will send you the Authorization Form.) 銀行戶口每月自動轉賬 (表格將另函寄上。)

PPS Payment 繳費靈

PPS Payment (The merchant code for The Hong Kong Federation of Youth Groups is 9345. Please use your contact number as the bill account number.)

繳費靈 (本會登記商戶編號：9345；請以您的電話號碼作為賬單/賬戶號碼)

Date of Payment 轉賬日期 _____

Credit Card 信用卡

- VISA MasterCard One-off Donation 單次捐款 Regular Monthly Donation 每月捐款

Card Number 信用卡號碼	Expiry Date 有效期至 / (MM月/YY年)	Signature of Card Holder 持卡人簽署
Name of Card Holder 持卡人姓名	HK 港幣 \$	

Donor Information 捐款者資料

Name of Donor / Organisation 捐款人 / 機構 _____

Name of Contact Person (if applicable) 聯絡人姓名 (如適用) _____

Telephone / Mobile 電話 _____

Fax 傳真 _____

Email 電郵 _____

Donation receipt? 捐款收據? Yes 是 No 否 Name for Receipt 收據抬頭 _____

Address 郵寄地址 _____

I / My organisation wish(es) to remain anonymous. 青協毋須就是項捐款於任何電子及印刷品鳴謝本人/本機構。

The Hong Kong Federation of Youth Groups (the Federation) respects the privacy of individuals. We do our best to ensure the collection, use, storage, transfer and disclosure of your personal data comply with the Personal Data (Privacy) Ordinance.

You have the right to access and correct your personal data and request a copy of the said data. You can make your request to personaldata@hkfyg.org.hk. Your request will be answered in 40 days. A fee may be charged for processing a data access request.

Your personal data may be used for purposes related to participation in various programmes and activities, issuing of receipts, collection of user feedback, conduct of analysis, and any other initiatives related to the aims and objectives of the Federation. Please indicate below if you agree to being contacted for these purposes. Should you wish to stop receiving news and information from the Federation and its service units, please contact us at unsubscribe@hkfyg.org.hk.

香港青年協會 (青協) 非常重視個人私隱，並確保轄下之服務於任何情況下收集、使用、儲存、轉移及查閱個人資料之程序均符合香港的《個人資料(私隱)條例》的要求。您有權要求查閱和改正所提供的個人資料及索取有關資料的複本。

如需查詢或改正個人資料，可電郵至 personaldata@hkfyg.org.hk。在收到您提出的要求後，本會將在40天內給予回覆，並將可能就此收取合理的費用。

您提供之個人資料將用作參與活動的相關用途、簽發收據、收集意見、資料分析，及其他配合本會宗旨及使命的事項。請在下面的方格上填上劃號，表示您是否願意收到本會通訊。如需取消接收青協及有關單位的資訊，請電郵至 unsubscribe@hkfyg.org.hk 與青協職員聯絡。

I / We do not wish to receive communication through the channels below *:

本人 / 本機構 不希望從以下渠道接收通訊 *:

- Email 電郵 Mail 郵寄 Phone 電話

e-Donation 電子捐款



PayMe



Alipay HK 支付寶HK



Octopus 八達通



FPS 轉數快

e-Giving



giving.hkfyg.org.hk

For donation receipt, please send us the screenshot of the donation transaction record with the name for the receipt, contact number and address via text message, fax, email or by post.

請將捐款截圖，連同收據抬頭、聯絡電話及郵寄地址，以短訊、傳真、電郵或郵寄方式交回本會，以便發放捐款收據。

Please send this form with your crossed cheque / the bank's receipt / screenshot of the donation record to:
捐款表格、劃線支票/銀行存款證明/捐款截圖，敬請寄回：

Partnership and Resource Development Office
The Hong Kong Federation of Youth Groups
21/F, The Hong Kong Federation of Youth Groups Building
21 Pak Fuk Road, North Point, Hong Kong

香港北角百福道21號
香港青年協會大廈21樓
香港青年協會「伙伴及資源拓展組」

Tel 電話: 3755 7103 / 9455 4305 (WhatsApp)

Fax 傳真: 3755 7155

Email 電郵: partnership@hkfyg.org.hk



Acknowledgments 鳴謝

The Federation would like to express its most sincere thanks to the following donors and supporters for their generous help during the year 2021-22.

本會謹向二零二一至二二年度慷慨捐助和支持本會的社會各界人士和團體，致以謝意。

(in alphabetical order 按英文字母順序排列)

Major Collaborators, Partners and Sponsors

Airport Authority Hong Kong
 Au Bak Ling Charity Trust
 Beat Drugs Fund
 Chan Cheung Mun Chung Charitable Fund
 Chief Executive's Community Project List
 CLP Power Hong Kong Ltd.
 Coca-Cola Foundation, The
 Commerce and Economic Development Bureau
 Community Chest of Hong Kong, The
 Education Bureau
 Greater Bay Area Homeland Youth Community Foundation
 Home Affairs Bureau (renamed as Home and Youth Affairs Bureau from 1 July 2022)
 Hong Kong Council of Social Service, The
 Hong Kong Housing Society
 Hong Kong Jockey Club Charities Trust, The
 Hongkong and Shanghai Banking Corporation Ltd., The
 Hongkong Bank Foundation
 Innovation and Technology Commission
 Innovation and Technology Fund
 King's Flair Development Ltd.
 Leisure and Cultural Services Department
 Lo Kwee Seong Foundation
 Lotteries Fund
 Partnership Fund for the Disadvantaged
 Rosewood Hotel Group
 Simon K.Y. Lee Foundation
 Sir David Trench Fund for Recreation
 Social Innovation and Entrepreneurship Development Fund
 Social Welfare Department
 Standing Committee on Language Education and Research
 Tin Ka Ping Foundation
 Tourism Commission

Businesses

2 Good Bakery
2 Square Metres
2Bliss Studio Ltd.
360 Holidays Ltd.
3D-GOLD Jewellery (HK) Ltd.
3D-GOLD Management Services Ltd.
4M Industrial Development Ltd.
4N Ltd.
759 Store
8 Star Property Agency Ltd.
Able Fancy Development Ltd.
Access Academic Consultancy Ltd.
Access Universe
ACS Tech System Ltd.
AdTactics Marketing International Ltd.
Advance Multimedia Co. Ltd.
Amazing Life Development Co., Ltd.
American Express Hong Kong
Anglia Design Ltd.
Aromatherapy Co. HK Ltd., The
Artspirit Creative Co. Ltd.
Asian Academy for Sports and Fitness Professionals Ltd.
Avoid Obvious Architects
Babyboom Learning Co. Ltd.
Bank of China Group Investment Ltd.
BBPOS Ltd.
Beacon Group Ltd.
Big Red Design Ltd.
BioEm Air Sanitizing Technology Co. Ltd.
BNP Paribas
Boaz International Education Institute Ltd.
Boogie Dance Studio
Boutir Ltd.
Bright Future Pharmaceutical Laboratories Ltd.
Brilliant Education Expert Ltd.
BSL Containers Ltd.
Burlington Hotels Ltd., The
C & S Smartsafe Ltd.
Canaan Creative Education
Capmi Technology Ltd.
Cargo Services Far East Ltd.
Caring Wheelchair and Limousine Services Ltd.
Casa Republic (International) Ltd.
Castle Service Ltd.
Charming Accounting and Secretarial Service Co.
Cheongsam Forever
Chi Fung Engineering Co. Ltd.
China Equipment Engineering Co. Ltd.
Chinachem Group
Chor Kee Construction Materials
CITIC Telecom International CPC Ltd.
Clarins Ltd.
Clearwater Bay Golf and Country Club, The
ClusterTech Ltd.
Coffee Terrace, The
Com We Co. Ltd.
Come Know (Asia) Ltd.
Conduct Chinese Medicine Clinic Ltd.
Council for International Cultural Exchange
Cowboy Food Co. Ltd.
Creativo Design & Contracting Co., Ltd.
Create Studio Ltd.
Cross International Ltd.
CW CPA
Descente Ltd.
Direct Marketing of Asia Ltd.
DMT Direct (HK) Ltd.
DNT FPV Technology Co. Ltd.
Don Nelson Recruitment Ltd.
Double O
DT Digital
E TAG Ltd.
e-banner Ltd.
Eco-Greenergy Ltd.
EcoSage Ltd.

Eidealink Ltd.
 Eidealink Public Relations Ltd.
 Ensec Solutions Hong Kong Ltd.
 Equity Financial Press Ltd.
 Eugene Group Ltd.
 Fai Gor's Kitchen
 Farmacy HK Ltd.
 Fat Kee Noodle Factory Ltd.
 Feva Works IT Education Centre
 Find Solution Ai Ltd.
 Foon Tai Trading Co. Ltd.
 Fosun Hani Securities Ltd.
 Fosun International Ltd.
 Frame & Fame Personal Branding
 Gabriel Technology (HK) Ltd.
 Galaxy Engineering Holding Co. Ltd.
 GCS Ltd.
 Gear Workshop
 Genesis Block Ltd.
 Genki Sushi Hong Kong Ltd.
 Getz Bros. & Co. (Hong Kong) Ltd.
 Global Investigation and Security Consultancy Ltd.
 GLOW Makeup Academy by Janice Lam
 GOGO X
 Golden Key Mini-Storage Group Ltd.
 Goldex Information Technology Ltd.
 Goldmax Immigration Consulting Co., Ltd.
 Goodwill Management Ltd.
 Green Island Cement Co., Ltd.
 Green ONI Ltd.
 Hair Rejuvenation Co., Ltd.
 Hang Lung Properties Ltd.
 Hang Seng Bank Ltd.
 HDcourse Ltd.
 Heart-to-Heart Life Counselling and Education Services Ltd.
 Health Advances Asia Ltd.
 Henderson Land Development Co. Ltd.
 Herbs Generation International Ltd.
 Hexa Pharmaceutical Ltd.
 HGC Global Communications Ltd.
 Hide and Seek Tour
 Ho & Partners Architects Engineers & Development Consultants Ltd.
 Ho Win Roasted Meat Restaurant
 Holistic Education Ltd.
 Hon Sum Beauty Centre
 Hong Kong Art Development Co. Ltd.
 Hong Kong Disneyland
 Hong Kong Exchanges and Clearing Ltd.
 Hong Kong Ferry (Holdings) Co. Ltd.
 Hong Kong Ferry Finance Co. Ltd.
 Hong Kong Golf Club, The
 Hong Kong Health Accessible Limousine Co. Ltd.
 Hong Kong Jockey Club, The
 Hong Kong Moving Service Co.
 Hong Kong Professional Training Centre
 Hong Kong Trainers Centre
 Hong Kong Tramways, Ltd.
 Hong Yip Service Co. Ltd.
 Hongkong Electric Co., Ltd., The
 Hongkong Land Ltd.
 Hung Fat Ho Food Ltd.
 Hutchison Logistics (HK) Ltd.
 iDDY.ai
 Idynamic Media Co. Ltd.
 In N Out International Corporate Ltd.
 Industrial and Commercial Bank of China (Asia) Ltd.
 Infinitus Plaza
 Inno-Bag Ltd.
 InnoEdge Consulting Ltd.
 Innopage Ltd.
 J.P. Morgan
 JAG Solutions Ltd.
 Jeunesse Global Group Ltd.
 JMB Construction Co. Ltd.
 Joint Profit

Juicyapp
 K&K Management Services Ltd.
 K11 Concepts Ltd.
 Kai Shing Management Services Ltd.
 Kaitelynn Mak Chinese Culture Workshop
 Kam Kee Holdings Ltd.
 Kerry Holdings Ltd.
 Keymax Technology (Hong Kong) Ltd.
 King Force Security Ltd.
 King's Flair Development Ltd.
 Kirin Catering Groups Holdings Co. Ltd.
 KPC International Ltd.
 Kwok, Ng & Chan, Solicitors & Notaries
 L & K Group Holdings Ltd.
 Lady M Confections Co., Ltd.
 Land Master & Associates Valuers Ltd.
 Lantau Tours Ltd.
 Lead On Asia Ltd.
 Lee Kum Kee Co. Ltd.
 Legend Creative
 LINGage Counselling and Career Development Center Ltd.
 LinkedIn Corporation
 Link-Pro CPA Ltd.
 Living Stone Printing Co. Ltd.
 Long Benefit Enterprises Ltd.
 Luen Thai Holdings Ltd.
 Luk King Cleaning Service Ltd.
 Mainetti (HK) Ltd.
 Man Tak Metal Co. Ltd.
 Maritime Square
 Master Edutainment Ltd.
 Mayer Brown
 McKinsey & Company
 Media Explorer Ltd.
 Media Pro Ltd.
 Mega Nice Ltd.
 Memorigin Watch Co. Ltd.
 Meta
 MF Jebsen Group
 Midland Financial Group Ltd.
 Mis' Garden
 Mitsubishi Electric (Hong Kong) Ltd.
 Mr. Choi Veg
 mReferral Mortgage Brokerage Services
 MTR Corporation Ltd.
 My Beloved Florist
 Nelson Jewellery Arts Co. Ltd.
 New Idea Office Supplies
 New Verdure Printing & Design
 New World Development Co. Ltd.
 Ngong Ping 360 Ltd.
 O! Evelyn (HK) Ltd.
 Ocean Muay Thai & Fitness
 Ocean Three Development Ltd.
 Omni Art
 One & Associates Valuers Ltd., The
 One Cool Pictures Ltd.
 OnLux Beauty Ltd.
 Orient Overseas Container Line Ltd.
 P&P Dental and Medical Sciences Ltd.
 P. C. Woo & Co.
 Pacific Sense Enterprises Ltd.
 PACO Communications Ltd.
 Palo Alto Networks
 Parkland Music Ltd.
 Peak Hunter, The
 Peak Tower Ltd., The
 Peak Tramways Co., Ltd.
 Pegasus Developing Kingdom Co. Ltd.
 People's Place
 Perfect Medical Health Management Ltd.
 Play More Ltd.
 Pocity Engineering Co., Ltd.
 Pokeguide Ltd.
 Polytrade Paper Corporation Ltd.
 Polywin Computer Ltd.

Poon'sPharm (U.S.A.) Medicine Ltd.
 Potter Industries Ltd.
 Print100.com
 Pro-Balance Knives
 Professional Mediation Consultancy Centre Ltd.
 Prudential Hong Kong Ltd.
 Q P Group Holdings Ltd.
 RaceFit International Co. Ltd.
 Raymond Lo Feng Shui School
 Ray's Physiotherapy Clinic
 Raze Technology Ltd.
 Reckon System (Asia) Ltd.
 Richfield Dynamic Technology Ltd.
 Rising Deco Ltd.
 River Cam Clinic Management Ltd.
 Rover International Ltd.
 Roy Mark (Asia) Ltd.
 RSM Hong Kong CPA Ltd.
 Run2gather
 Sa Sa International Holdings Ltd.
 Sail Engineering Ltd.
 Samsung Electronics H.K. Co., Ltd.
 SBC International
 SecurePro Technology Security System Ltd.
 SenseTime
 Shell Hong Kong Ltd.
 SHOPLINE Ltd.
 Sil-Metropole Organisation Ltd.
 Sino Group
 Smart Guard Environmental Management Ltd.
 SME Lab
 Social Stand Ltd.
 Sofamark Ltd.
 Solid Idea Ltd.
 Soundwill Holdings Ltd.
 South China Morning Post
 Southwest Securities International Securities Ltd.
 Speedy Group Corp. Ltd.
 Splash Forward Hong Kong Ltd.
 Starling Labs Ltd.
 StarPro Agency Ltd.
 Sun Cupid Technology (HK) Ltd.
 Sun Ferry Services Co. Ltd.
 Sun Hung Kai Properties Ltd.
 Sunpac Tours & Travel Ltd.
 SuperFarm (Hong Kong) Ltd.
 Supreme Management Services Ltd.
 Sushi Yutaka
 Sustenir Agriculture (Hong Kong) Ltd.
 Swar Design Co. Ltd.
 Swire Properties Ltd.
 Synergis Holdings Ltd.
 Tam Wing Kun Holdings Ltd.
 Tech Data Computer Service (Hong Kong) Ltd.
 Telford International Co. Ltd.
 Tien Lu Dispensary Ltd.
 Tomson Group Ltd.
 Topsoya
 Trip.com Group Ltd.
 Tung Yuen Ho Co. Ltd.
 Twitchy Finger Ltd.
 U & I Beauty & Slim Ltd.
 U.C. (Asia) Services Ltd.
 Ubiquity Creative Group Ltd.
 UBS
 UNSUIKYO
 Urban Group
 Urban Mushroom HK
 Vantis Consulting Group Ltd.
 Venture Partners CPA Ltd.
 Verdant Asset Management (Asia) Ltd.
 Verde MAR
 Victory Securities Co. Ltd.
 Visionary Agile Spirit Co. Ltd.
 Vita Green Health Products Co., Ltd.
 Vitargent (International) Biotechnology Ltd.

Vizz Digital Group
VTech Holdings Ltd.
Wa Theater (HK) Co., Ltd.
Walk In Hong Kong Ltd.
Wilson Property Management Ltd.
Wing On Department Stores (Hong Kong) Ltd., The
World Wide P.C.B. Equipments Co., Ltd.
Zhenro Properties Group Ltd.
Zitison Ltd.

Government and Related Organisations

18 District Councils
18 District Fight Crime Committees
18 District Youth Programme Committees
Agriculture, Fisheries and Conservation Department
Board of Management of the Chinese Permanent Cemeteries, The
Chinese Temples Committee
Constitutional and Mainland Affairs Bureau
Correctional Services Department
Customs and Excise Department
Food and Health Bureau (restructured to Health Bureau & Environment and Ecology Bureau from 1 July 2022)
Home Affairs Department
Hong Kong Education City Ltd.
Hong Kong Housing Authority
Hong Kong Maritime and Port Board
Hong Kong Police Force
Hong Kong Science and Technology Parks Corporation
Hong Kong Science Museum
Hong Kong Tourism Board
Hong Kong Trade Development Council
Investor and Financial Education Council
Kwai Chung Hospital
Narcotics Division, Security Bureau
Office for Film, Newspaper and Article Administration
Office of the Privacy Commissioner for Personal Data, Hong Kong

Planning Department
Princess Margaret Hospital
StartmeupHK
Tai O Rural Committee
Transport and Housing Bureau (restructured to Housing Bureau & Transport and Logistics Bureau from 1 July 2022)
Tseung Kwan O Hospital
United Christian Hospital
West Kowloon Cultural District Authority
Youth Development Commission

Universities and Educational Organisations

Caritas Institute of Higher Education
Chinese University of Hong Kong, The
City University of Hong Kong
Education University of Hong Kong, The
Gratia Christian College
Hang Seng University of Hong Kong, The
HKU SPACE
Hong Kong Baptist University
Hong Kong Community College, The Hong Kong Polytechnic University
Hong Kong Metropolitan University
Hong Kong Polytechnic University, The
Hong Kong Shue Yan University
Hong Kong University of Science and Technology, The
Lingnan University
University of Hong Kong, The
Vocational Training Council

Non-governmental Organisations

Academy of Chinese Studies
Actors' Family
City's Treasure
English-Speaking Union (Hong Kong), The
Environmental Association

Evangelical Lutheran Church Social Service – Hong Kong
 Food Grace
 Fung Ying Seen Koon
 Good Seed
 Haw Par Music Foundation Ltd.
 Hong Kong Arts Centre
 Hong Kong Chinese Orchestra
 Hong Kong Design Centre
 Hong Kong Heritage Conservation Foundation Ltd.
 Hong Kong Interior Design Association
 Hong Kong Organic Resource Centre
 Hong Kong Sheng Kung Hui Welfare Council Ltd.
 Hong Kong Social Service Professional Alliance of
 The Guangdong-HK-Macau Greater Bay Area Ltd.
 Hong Kong Young Academy of Sciences, The
 International IP Commercialization Council -
 Hong Kong (GBA) Chapter
 Jockey Club Museum of Climate Change
 Kaifong Tour
 K-Farm
 Lions Club of Kowloon City
 Lions Club of Tsuen Wan
 Project Space
 Rotary Club of Dragon Hong Kong
 Save the Children Hong Kong
 SDSN Hong Kong
 Sik Sik Yuen
 Tai O Cultural Association Ltd.
 Tsung Tsin Mission of Hong Kong Social Service, The
 Windshield Charitable Foundation
 Wofoo Social Enterprises

Funds and Foundations

Angel Investment Foundation
 Beautiful Walk Charitable Foundation Ltd.
 C.C. Wu Cultural & Education Foundation Fund Ltd.
 Centaline Charity Fund Ltd.

D. H. Chen Foundation, The
 Environment and Conservation Fund
 HKEX Foundation Ltd.
 ICBC (Asia) Charitable Foundation Ltd.
 Jennifer W.F. Liu Charitable Foundation Ltd.
 JPMorgan Chase Foundation
 K&K Charity Ltd.
 Keswick Foundation, The
 LC Charity Fund
 LCH Charitable Foundation Ltd.
 Lee Hysan Foundation
 Lee Kum Kee Hope as Chef Charitable Foundation Ltd.
 Lions Club of Tsuen Wan Charity Foundation Ltd.
 Ng Teng Fong Charitable Foundation
 Ocean Park Conservation Foundation, Hong Kong
 Quality Education Fund
 Rainbow Foundation Ltd.
 Simon K. Y. Lee Karen's Fund
 Swire Group Charitable Trust
 Swire Properties Community Caring Fund
 Yip Cheung Chun Charitable Fund Ltd.

Chambers and Associations

Association of I.T. Leaders in Education
 Association of Retired Elderly Ltd.
 Federation of Parent-Teacher Associations
 Golden Bauhinia Women Entrepreneur Association
 Hong Kong Association of Banks, The
 Hong Kong Association of Staff and Workers Education
 and Vocational Training Ltd.
 Hong Kong Building Inspection Association
 Hong Kong Cruise & Yacht Industry Association
 Hong Kong eCommerce Supply Chain Association
 Hong Kong General Chamber of Young Entrepreneurs, The
 Hong Kong Internet & eCommerce Association Ltd.
 Hong Kong Multimedia Design Association Ltd.
 Hong Kong Resuscitation Society Ltd.

Hong Kong Social Workers Association
Hong Kong United Youth Science and Technology Association Ltd.
Institute of Cognitive Therapy
Junior Chamber International North District (Hong Kong) Ltd.
Law Society of Hong Kong, The
Tai O Chinese Chamber of Commerce

Mainland and Overseas Organisations

British Council
Deloitte China
Echigo-Tsumari Art Triennale Executive Committee
e-PARK
Foshan Hong Kong-Macao Youth Entrepreneurship Center
Genius Toy Taiwan Co., Ltd.
Global Youth Entrepreneur Association
Guangdong Cheng Gong Law Firm
Guangdong Youth Federation
Guangzhou Tianhe Hong Kong and Macau Youth Association
GungHo Space
HE Innovation Space
Hong Kong-Macao Youth Innovation and Entrepreneurial Base in Dongguan Eco-Industrial Park at Songshan Lake
Huizhou Zhongkai Hong Kong-Macao Youth Entrepreneurship Base
Jiangmen Talents Start-up Center
Jiangmen Youth Talents Innovation and Entrepreneurship Base
KICKEASY GmbH
LABO Language Laboratory
Lee Kuan Yew School of Public Policy, National University of Singapore
Liaison Office of the Central People's Government in the Hong Kong S.A.R.
Pyeongtaek International Exchange Foundation
Qianhai Shenzhen-Hong Kong Youth Innovation and Entrepreneur Hub (E-Hub)

Shenzhen Social Commonweal Fund Federation
Shunde Foundation for Innovation and Entrepreneurship
Tencent Start Innovation Center
United Nations Development Programme
Zhuxi Inno-Valley Science and Technology Park
中天粵港青創基地
莞城粵港澳青年創新創業基地

Individuals or Group Donors & Supporters

Dr. Au Kwok-nin
Dr. Au Siu-foon
Dr. Gigi Au-yeung
Mr. and Mrs. Johnny Au-yeung
Mr. David Begbie
Prof. Karim Bettache
Mr. James Bishop
The Hon. Mrs. Verina Bokhary, SBS
Dr. Margaret Burnett
Mr. Alman Chan Siu-cheuk
Ms. Clara Chan Ka-man
Ms. Hayley Chan
Mr. Chan Ka-ho
Prof. Keith Chan
Mr. Chan Kim-cheong
Ms. Chan Kit-lee
Mr. Chan Kwok-wing
Mr. Chan Leong-kau
Ms. Chan May-ling
Ms. Miko Chan
Mr. Vicky Chan
Mr. Wesley Chan
Ms. Anny Chang
Mr. Chau Hiu-chung
Prof. Albert Chen Hung-ye, GBS JP
Mr. Clement Cheng
Ms. Florence Cheng
Mr. Cheng Ka-kit

Mr. Cheuk Wing-hong
 Dr. Winnie Cheuk
 Prof. Anthony Cheung Bing-leung, GBS JP
 Mr. Jason Cheung
 Ms. Katherine Cheung
 Mr. Cheung Kin-sun
 Mrs. Lisa Cheung
 Dr. Louis Cheung
 Mr. Michael Cheung Chun-leung
 Mr. Nixon Cheung
 Ms. Cheung Siu-man
 Mr. Cheung Yam-lung
 Mr. Ching Kwong-leung
 Mr. Ching Kwong-wa
 Ms. Ching Shuk-ling
 Ms. Bonnie Chiu Lai-yu
 Ms. Joyce Choi Suk-ling (Choiee)
 Ms. Choi Tsz-kwan
 Mrs. Choi Ma Oi-kuen, MH
 Ms. Chow Ka-wai
 Ms. Ruby Chow
 Mr. Choy Chit-shing
 Mr. Ricky Chu Man-kin
 Mr. Chu Tsz-wing
 Ms. Irene Chung Wai-kwan
 Ms. Laura Cozijnsen
 Mrs. Olivia Davies
 Mr. Frank Fan
 The Hon. Mrs. Rita Fan Hsu Lai-tai, GBM GBS JP
 Ms. Florence Fung
 Ms. Fung Man-yi
 Ms. Fung Shui-yin
 Ms. Fung Sze-man
 Mrs. Fung Cheng Wai-yee
 Ms. Mary Natalia Hau Luen-tung
 Mr. Jonathan Ho
 Mr. Kelson Ho Ka-ching
 Ms. Hui Yin-shan

Ms. Waddhna In
 Ms. Shathy Jomoddar
 Mr. Akira Kawasaki
 Ms. Linka Ke Lin
 Mr. Kei Sze-fai
 Dr. Kim Kyungmook
 Dr. Amy Kong Mang-yee
 Ms. Samantha Kong
 Mr. Kwan Chi-kuen
 Mrs. Karina Kwan
 Mr. Kwok Kwai-wah
 Ms. Kwok Siu-ying
 Mr. Kwok Yui-ham
 Prof. Veronique Lafon-Vinaiis
 Mr. Charles Lai
 Ms. Covil Lai
 Mr. Jack Lai Shun-chi
 Ms. Lai Po-shan
 Ms. Vanesse Lai
 Mr. Lam Fu-kwai
 Prof. Lam Hon-ming
 Mr. Nelson Lam Kwok-tong
 Mrs. Nina Lam Lee Yuen-bing, MH
 Prof. Paul Lam Kwan-sing, SBS JP
 Mr. Paul Lam Wing-on
 Prof. Simon Lam Shing-kwong
 Prof. Lam Weng-cheong
 Mrs. Peggy Lam Pei Yu-dja, GBS OBE JP
 Mr. David Lan Hong-tsung, GBS ISO JP
 Prof. Arthur Lau
 Mr. Benny Lau Siu-tsang
 Mr. Christopher Lau Kwan
 Mr. David Lau
 Mr. George Lau Ka-keung, BBS MH JP
 Mr. Lau Hei-yuen
 Ms. Kate Lau
 Mr. Ken Lau
 Ms. Lau Yim-mui

Ms. Lau Yuk-yee
 Ms. Viann Law Wai-ying
 Mr. Clive Lee
 Ms. Joyce Lee Kwai-sheung
 Ms. Lee Ka-man
 Ms. Marina Lee
 Dr. Sarah Lee Wai-sze, SBS MH
 Ms. Shelley Lee Lai-kuen, GBS OBE JP
 Mr. Stephen Lee Fook-hon
 Ms. Lee Suk-yin
 Ms. Tracy Lee
 Dr. Daren Leung
 Mr. Edward Leung
 Dr. the Hon. Elsie Leung Oi-sie, GBM JP
 Ms. Jessica Leung
 Mr. Leung Man-fai
 Ms. Leung Mei-see
 Ms. Promail Leung Kin-yi
 Ms. Cindy Leung Sze-man
 Ms. Vivian Leung
 Mr. Leung Wai-kin
 Mr. Leung Wing-yi
 Ms. Leung Ying-suet
 Ms. Li Ka-ka
 Ms. Kinnie Li
 Ms. Jenny Liu
 Mr. Teddy Liu Kwok-tai
 Mr. Henry Lo
 Mr. Victor Lo Wai-tak
 Ms. Lok Shui-ping
 Mr. Luo Kaidi
 Mr. Ma Tat-sing
 Dr. Calvin Mak Hoi-kwan
 Ms. Ansah M. Malik
 Prof. Gordon Mathews
 Mr. James Mok Hon-fai
 Mr. Mok Ka-keung
 Mr. Ng Chi-kin
 Mr. Ng Ho-yin
 Prof. Ng Mee-kam
 Mr. Wilfred Ng Sau-kei, GBS MH JP
 Ms. Ngai Hei-sun
 Ms. Bella Ngoc Hong Vuong
 Ms. Joyce Nip
 Mr. Kenro Oshidari
 Mr. Paklam & Ms. Karman
 Mr. Pang Che-chung
 Dr. Pei Qing
 Mr. Pham Dinh-long
 Mr. Poon Kai-cheung
 Mr. Poon Kwok-hui
 Share for Good initiated by New World Development
 Mr. Kenneth She
 Mr. Fred Sheu
 Mr. Si Chung-siang
 Mr. Sin So-kan
 Ms. Sit Po-see
 Mrs. Susan So Chan Wai-hang, SBS
 Mr. Gene Soo
 Prof. Joseph Sung Yun-wing
 Mr. Ricky Szeto
 Ms. Annie Tam Kam-lan, GBS JP
 Mr. Tam Man-kei
 Mr. Martin Tam & Mrs. May Tam
 Dr. Billy Tang Ka-jau
 Ms. Tang Tsui-ying
 Mr. Tang Yiu-bong
 Dr. Sabrina Tin
 Ms. Christina Ting Yuk-chee, GBS JP
 Ms. Ada To Man-wai
 Dr. Jennifer Tong
 Mr. Tsang Chun-wing
 Mr. Derek Tse Pui-keung
 Ms. Nancy Tse Sau-ling, JP
 Mr. Clement Tung
 Mr. Wai Chi-sing, GBS JP

Mr. George Wan Tsz-ki
 Dr. Christoph Nedopil Wang
 Dr. Norah Wang
 Mr. Adam Wong
 Ms. Anissa Wong Sean-yee, GBS JP
 Mr. Brian Wong Chak-fung
 Mr. Charles Wong
 Mr. Ernest Wong
 Ms. Esther Wong
 Mr. Gary Wong
 Ms. Grace Wong Wing-heung
 Mr. Wong Ho-chung
 Ms. Janet Wong Wing-chen, SBS JP
 Prof. Wong Kam-fai, MH
 Mr. Kenrick Wong
 Mr. Loz Wong
 Mr. Raymond Wong Hung-chiu, GBS JP
 Dr. Stephen Wong
 Mr. Wong Sum-yin
 Dr. Wong Sze-hung
 Mr. Wong Sze-lok
 Mr. Talis Wong
 Mr. Toby Wong
 Mr. Samuel Wu Sheung-shau
 Ms. Yang Kit-suen
 Mr. David Yen Wai-yin
 Prof. Yeoh Eng-kiong, GBS OBE JP
 Ms. Carol Yeung
 Mr. Yeung Hon-man
 Mrs. Wendy Yih and Mr. Baldwin Yih
 Dr. Yip Kam-wing
 Mr. Yip Ka-tai
 Prof. Paul Yip Siu-fai, MH
 Mr. Yip Tsz-lam
 Ms. Yiu Kit-ching
 Mr. Yu Ka-sing
 Ms. Yu Mei-lan
 Ms. Denise Yue Chung-yee, GBS JP

Dr. Yun Pui-ho
 Mr. Michael Yung
 Zilch

Owing to limited space, we regret not being able to include the names of all individual donors and supporters. The Federation would also like to most warmly thank all the volunteers who have assisted in our programmes and activities and to express our gratitude to all the media for promoting our services.

由於篇幅所限，恕未能盡錄所有善長芳名。本會亦謹此向各位曾協助推行服務及活動的義工，衷心致意；並感謝各傳媒機構協力推廣本會服務。